



PAKISTAN NOTICES TO MARINERS

WEEKLY EDITION 01

Notice: 01 – 03(P)/19

05 JAN 2019

Copies of these Notices can be obtained gratis from Mercantile Marine Department and PN Chart Depot / NAVAREA IX Headquarters, 11 Liaquat Barracks Karachi. The same can be downloaded from web: www.paknavy.gov.pk/hydro.

CONTENTS

- I NOTICES TO MARINERS
- II REPRINTS OF RADIO NAVIGATIONAL WARNINGS
- III CORRECTIONS TO SAILING DIRECTIONS
- IV MARINE INFORMATION

Mariners are requested to inform the Hydrographic Department, Naval Headquarters, 11 Liaquat Barracks, Karachi, Pakistan, immediately on the discovery of new dangers, or suspected dangers to navigation and of changes or defects in aids to navigation noticed in NAVAREA IX and of shortcomings in PAK charts or publications.

Tel : + 92-21-48506151
+ 92-21-48506152
Fax : + 92-21-99201623, + 92-21-99203246
E-mail : hydropk@paknavy.gov.pk
hydrpk@gmail.com
Web : www.paknavy.gov.pk/hydro.

MUHAMMAD KHALID
Captain Pakistan Navy
Hydrographer

Hydrographic Department, Naval Headquarters, 11 Liaquat Barracks, Karachi 75530, PAKISTAN

PART – I
NOTICES TO MARINERS

01/19 QATAR - Wreck.

BA Chart 2837 (INT 7017) [*previous update 6172/18*] WGS84 DATUM

Insert  26° 05'·6N., 53° 03'·5E.


BA Chart 2858 (INT 750) [*previous update 4359/18*] WGS84 DATUM

Insert  26° 05'·6N., 53° 03'·5E.

BA Chart 2886 (INT 7243) [*previous update 5586/18*] WGS84 DATUM

Insert  26° 05'·6N., 53° 03'·5E.

BA Chart 2887 (INT 7232) [*previous update 6172/18*] WGS84 DATUM

Insert  26° 05'·6N., 53° 03'·5E.

Source: Admiralty Notice to Mariners No. 59/2018.


02/19 QATAR - NM Blocks. Maritime limit. Restricted area. Legends.

BA Chart 2523 (INT 7250) [*previous update 5586/18*] WGS84 DATUM

Insert the accompanying block, centred on:
maritime limit, pecked line, joining:

legend, *Waiting Area*, within:

25° 51'·4N., 51° 47'·8E.
(a) 25° 55'·38N., 52° 15'·80E.
(b) 25° 55'·38N., 52° 17'·60E.
(c) 25° 53'·78N., 52° 17'·60E.
(d) 25° 53'·78N., 52° 15'·80E.
(a)-(d) above

Delete limit of restricted area, , and associated legend, *Waiting Area*, joining:

26° 02'·48N., 52° 11'·47E.
26° 02'·47N., 52° 13'·28E.
26° 00'·89N., 52° 13'·28E.
26° 00'·89N., 52° 11'·47E.

BA Chart 2886 (INT 7243) [*previous update 59/19*] WGS84 DATUM

Insert the accompanying block, centred on:
maritime limit, pecked line, joining:

legend, *Waiting Area*, within:

25° 50'·4N., 51° 47'·7E.
(a) 25° 55'·4N., 52° 15'·8E.
(b) 25° 55'·4N., 52° 17'·6E.
(c) 25° 53'·8N., 52° 17'·6E.
(d) 25° 53'·8N., 52° 15'·8E.
(a)-(d) above

Delete maritime limit, pecked line, and associated legend, *Waiting Area*, joining:

26° 02'·5N., 52° 11'·5E.
26° 02'·5N., 52° 13'·3E.
26° 00'·9N., 52° 13'·3E.
26° 00'·9N., 52° 11'·5E.

BA Chart 2887 (INT 7232) [*previous update 59/19*] WGS84 DATUM

Insert maritime limit, pecked line, joining:

legend, *Waiting Area*, close E of:

25° 55'·4N., 52° 17'·1E.
(a) 25° 55'·4N., 52° 17'·6E.
(b) 25° 53'·8N., 52° 17'·6E.
25° 53'·8N., 52° 17'·1E.
(a)-(b) above

BA Chart 2889 (INT 7211) [*previous update 6172/18*] WGS84 DATUM

Insert maritime limit, pecked line, joining:

legend, *Waiting Area*, within:

(a) 25° 55'·4N., 52° 15'·8E.
(b) 25° 55'·4N., 52° 17'·6E.
(c) 25° 53'·8N., 52° 17'·6E.
(d) 25° 53'·8N., 52° 15'·8E.
(a)-(d) above

BA Chart 3950 (INT 7244) [*previous update 5120/18*] WGS84 DATUM

Insert the accompanying block, centred on: 25° 49'·4N., 51° 47'·7E.

Delete maritime limit, pecked line, and associated legend, *Waiting Area*, joining:

26° 02'·00N., 52° 13'·27E.
26° 00'·93N., 52° 13'·27E.
26° 00'·93N., 52° 11'·46E.
26° 02'·00N., 52° 11'·47E.

Source: Admiralty Notice to Mariners No. 127/2018.

03(P)/19 QATAR - Anchorage areas.

1. A small craft anchorage area with a circular limit, radius 0.5M, has been established, centred on the following position:
25° 52′.00N., 51° 42′.00E.
2. The C4 anchorage area, bounded by the following positions, has been removed:
25° 53′.00N., 51° 48′.00E.
25° 53′.00N., 51° 49′.00E.
25° 52′.00N., 51° 49′.00E.
25° 52′.00N., 51° 48′.00E.
3. New anchorage areas have been established in the approaches to the Ra’s Laffan Port, bounded by the following positions:

<i>Designation</i>	<i>Position</i>
D5	25° 52′.00N., 51° 51′.00E.
	25° 52′.00N., 51° 52′.00E.
	25° 51′.00N., 51° 52′.00E.
	25° 51′.00N., 51° 51′.00E.
D6	25° 52′.00N., 51° 52′.00E.
	25° 52′.00N., 51° 53′.00E.
	25° 51′.00N., 51° 53′.00E.
E5	25° 51′.00N., 51° 52′.00E.
	25° 51′.00N., 51° 51′.00E.
	25° 51′.00N., 51° 52′.00E.
	25° 50′.00N., 51° 52′.00E.
	25° 50′.00N., 51° 51′.00E.

4.

E6	25° 51′.00N., 51° 52′.00E.
	25° 51′.00N., 51° 53′.00E.
	25° 50′.00N., 51° 53′.00E.
	25° 50′.00N., 51° 52′.00E.
E7	25° 51′.00N., 51° 53′.00E.
	25° 51′.00N., 51° 54′.00E.
	25° 50′.00N., 51° 54′.00E.
F5	25° 50′.00N., 51° 53′.00E.
	25° 50′.00N., 51° 51′.00E.
	25° 50′.00N., 51° 52′.00E.
	25° 49′.00N., 51° 52′.00E.
	25° 49′.00N., 51° 51′.00E.

5.

F6	25° 50′.00N., 51° 52′.00E.
	25° 50′.00N., 51° 53′.00E.
	25° 49′.00N., 51° 53′.00E.
	25° 49′.00N., 51° 52′.00E.
F7	25° 50′.00N., 51° 53′.00E.
	25° 50′.00N., 51° 54′.00E.
	25° 49′.00N., 51° 54′.00E.
	25° 49′.00N., 51° 53′.00E.
G5	25° 49′.00N., 51° 51′.00E.
	25° 49′.00N., 51° 52′.00E.
	25° 48′.00N., 51° 52′.00E.
G6	25° 48′.00N., 51° 51′.00E.
	25° 49′.00N., 51° 52′.00E.
	25° 49′.00N., 51° 53′.00E.
	25° 48′.00N., 51° 53′.00E.
G7	25° 48′.00N., 51° 52′.00E.
	25° 49′.00N., 51° 53′.00E.
	25° 49′.00N., 51° 54′.00E.
	25° 48′.00N., 51° 54′.00E.
H5	25° 48′.00N., 51° 53′.00E.
	25° 48′.00N., 51° 51′.00E.
	25° 48′.00N., 51° 52′.00E.
	25° 47′.00N., 51° 52′.00E.
	25° 47′.00N., 51° 51′.00E.

6.

H6	25° 48′.00N., 51° 52′.00E.
	25° 48′.00N., 51° 53′.00E.
	25° 47′.00N., 51° 53′.00E.
	25° 47′.00N., 51° 52′.00E.

- H7 25° 48′.00N., 51° 53′.00E.
25° 48′.00N., 51° 54′.00E.
25° 47′.00N., 51° 54′.00E.
- I5 25° 47′.00N., 51° 53′.00E.
25° 47′.00N., 51° 51′.00E.
25° 47′.00N., 51° 52′.00E.
25° 46′.00N., 51° 52′.00E.
25° 46′.00N., 51° 51′.00E.
- 7.
- I6 25° 47′.00N., 51° 52′.00E.
25° 47′.00N., 51° 53′.00E.
25° 46′.00N., 51° 53′.00E.
25° 46′.00N., 51° 52′.00E.
- I7 25° 47′.00N., 51° 53′.00E.
25° 47′.00N., 51° 54′.00E.
25° 46′.00N., 51° 54′.00E.
25° 46′.00N., 51° 53′.00E.

- 8. These changes will be included in a New Edition of BA Chart 3772 to be published 7 February 2019.
- 9. BA Chart 2523, 3950, 2886, 2887 and 2889 will be updated by Notice to Mariners.
(WGS84 DATUM)

BA Charts affected - 3772 (INT 7249) - 8116

Source: Admiralty Notice to Mariners No. 134(P)/2019.

PART – II
RADIO NAVIGATIONAL WARNINGS

304/18. U A E. Charts BA 2442, 2443, 2837, 2858, 2887, 2888, 2889, 3175, 3176 and 3739. SRV ‘VYACHESLAV TIKHONOV’ is towing 8 seismic cables 4 miles in length and is accompanied by support vessels ‘ZAKHER EAGLE’, ‘ZAKHER QUEEN’ and ‘AWALCO SAPPHIRE’. SRV VYACHESLAV TIKHONOV is working in area bounded by following coordinates:

- 25-02.80N 054-33.80E
- 25-25.40N 054-57.30E
- 25-31.30N 054-50.10E
- 25-29.40N 054-45.00E
- 25-35.50N 054-45.30E
- 25-42.20N 054-38.50E
- 25-41.50N 054-36.50E
- 25-41.30N 054-34.80E
- 25-41.20N 054-32.70E
- 25-41.40N 054-30.50E
- 25-36.40N 054-28.60E
- 25-34.50N 054-26.80E
- 25-32.80N 054-24.70E
- 25-33.30N 054-23.70E
- 25-35.80N 054-23.20E
- 25-36.90N 054-23.70E
- 25-36.50N 054-18.70E
- 25-36.20N 054-15.00E
- 25-34.30N 054-11.90E
- 25-29.00N 054-00.90E
- 25-10.60N 054-21.30E
- 25-10.00N 054-26.50E

During towing activity vessels will be restricted in their ability to manoeuvre. Mariners are requested to keep clear and proceed with reduced speed when transiting this area.

001/19. ARABIAN SEA. Oman. Charts BA 3785, 4071 and 4705. MV ‘POLAR EMPRESS’ will carry out seismic survey from 03 Jan to 31 Mar 2019. Ship will tow seismic cable 5 x 0.5 NM in length and width in area bounded by following coordinates:

- a. 18-41.10N 057-05.26E
- b. 17-58.23N 057-59.80E
- c. 17-27.30N 057-32.26E
- d. 18-02.11N 056-56.57E

Mariners are requested to navigate with caution and keep clear of this area. Cancel this message on 01 April 2019.

002/19. PAKISTAN. Sonmiani Bay. Charts PAK 22, 33, 57 (INT 751), BA 38, 39 and 707. Long range weapons firing practice by army air defence with live ammunition will be carried out between 0500-1000 UTC on 09 and 10 Jan 2019 with fall back date 11 and 12 Jan 2019 in area bounded by an arc of radius 33 NM centred at position 25-11N 066-45E between 250 to 330 degrees true. Ships and craft are to keep well clear of assigned danger area on above specified schedule. Cancel this message on 121100 UTC Jan 2019.

003/19. SELF CANCELLING. Navigational Warnings inforce:

- 2015 Series: 230 and 271.
- 2016 Series: 227.
- 2017 Series: 108, 178, 210, 215, 223, 262, 276, 308, 314, 321 and 324.
- 2018 Series: 005, 015, 033, 103, 119, 123, 131, 138, 143, 153, 155, 159, 161, 168, 176, 187, 196, 198, 220, 221, 222, 224, 225, 246, 255, 259, 260, 263, 264, 265, 266, 267, 270, 273, 277, 278, 279, 282, 291, 296, 297, 299, 300, 301, 302 and 304.
- 2019 Series: 001 and 002.

COASTAL WARNING

001/19. PAKISTAN. Sonmiani Bay. Charts PAK 22, 33, 57 (INT 751), BA 38, 39 and 707. Long range weapons firing practice by army air defence with live ammunition will be carried out between 0500-1000 UTC on 09 and 10 Jan 2019 with fall back date 11 and 12 Jan 2019 in area bounded by an arc of radius 33 NM centred at position 25-11N 066-45E between 250 to 330 degrees true. Ships and craft are to keep well clear of assigned danger area on above specified schedule. Cancel this message on 121100 UTC Jan 2019.

002/19. SELF CANCELLING. Navigational Warnings inforce:

- 2015 series: 080 and 095.
- 2016 series: 039 and 052.
- 2017 series: 041.
- 2018 series: 101, 111, 113 and 114.
- 2018 series: 001

- WPGs inforced 2018: 46, 53 and 54.
- WPGs cancelled 2018: 50.
- WPGs inforced 2019: 01.

PART – III

UPDATES TO ADMIRALTY SAILING DIRECTIONS

In force 28th December 2018

<i>NP no</i>	<i>Page(s)</i>	<i>Title</i>	<i>Weekly Edition</i>
38	West Coast of India	18th Edition (2016)	39/16
	6	India -- Approaches to Mumbai — Traffic Separation Scheme	25/18
	78	Maldives -- Addoo Atoll -- Kuda Kandu — Depths	13/18
	80	Maldives -- Huvadho Atoll — Depths	13/18
	125	Sri Lanka -- East Coast -- Sangamankanda Point — Directions; wreck	23/18
	148	Sri Lanka -- Colombo Harbour and Approaches — Pilotage	16/17
	149	Sri Lanka -- Colombo Harbour — Development	48/16
	150	Sri Lanka -- Colombo — Directions; light	17/17
	155	India -- Gulf of Mannar -- Pamban Island -- Kundugal Channel — Directions; beacons	26/18
	156	India -- South coast -- Pamban Pass — Directions; light	46/18
	157	India -- West coast -- Cape Comorin — Directions; obstruction	31/18
	158, 159	India -- Tuticorin — Arrival information; anchorage; pilotage	07/17
	176	India -- Port of Kochi -- Entrance Channel — Light alignment; buoy	07/18
	179	India -- West--north--west of Kochi — Passage; wrecks	31/17
	181	India -- Badagara — Directions; wreck	04/18
	181	India -- Badagara — Anchorage; dangerous wreck	04/18
	183	India -- Badagara — Directions; dangerous wreck	04/18
	189	India -- West coast -- Mangalore — Directions; depth	01/18
	188--189	India -- West coast -- Mangalore — Directions; wrecks	24/18
	191	India -- West coast -- New Mangalore — Berths	14/18
	193	India -- West coast -- Malpe — Anchorage	50/17
	193	India -- West coast -- Malpe — Anchorage	31/18
	197	India -- Honavar -- Basavarajadurg Island — Directions; shoal	35/18
	199	India - Bhatkal to Kharwar - Karwar Naval Harbour — Directions; depths	50/16
	211	India -- Approaches to Mumbai — Traffic Separation Scheme	25/18

215	India -- Vengurla -- Vengurla Roads — Anchorage	51/17
215	India -- Malvan Bay — Light sector	07/18
218	India -- Approaches to Mumbai — Traffic Separation Scheme	25/18
220	India -- Approaches to Mumbai — Traffic Separation Scheme	25/18
221	India -- Approaches to Mumbai — Traffic Separation Scheme	25/18
222	India – West coast -- JSW Jaigarh Port — Anchorages	21/17
222	India – West coast – JSW Jaigarh Port — Arrival information; pilotage	43/16
223	India -- Mirya Head to Mumbai (Bombay) -- Port Dabhol — Pilotage	26/17
224	India -- Mirya Head to Mumbai (Bombay) -- Port Dabhol — Anchorage	26/17
224	India -- Approaches to Mumbai — Traffic Separation Scheme	25/18
225	India -- Approaches to Mumbai — Traffic Separation Scheme	25/18
226	India -- Approaches to Mumbai — Traffic Separation Scheme	25/18
227	India -- Approaches to Mumbai — Traffic Separation Scheme	25/18
229	India -- Approaches to Mumbai — Traffic Separation Scheme	25/18
229, 230	India – Approaches to Mumbai — General information; depths; TSS	27/17
230	India -- Approaches to Mumbai — Traffic Separation Scheme	25/18
231	India – Approaches to Mumbai — Directions; approach	27/17
231	India -- Approaches to Mumbai — Traffic Separation Scheme	25/18
232	India – Mumbai Harbour — Arrival information; traffic regulations	27/17
234	India – Mumbai Harbour — Anchorages; general information; deep water anchorage; emergency anchorage	27/17
235	India -- West Coast -- Mumbai (Bombay) Harbour -- Basins and berths — depths	19/18
237	India – Jawahar Lal Nehru Port — Anchorage	22/17
239	India -- Approaches to Mumbai — Traffic Separation Scheme	25/18
240	India -- Approaches to Mumbai — Traffic Separation Scheme	25/18
242	India -- Outer approach to Gulf of Khambhat -- Malacca Banks — Directions; TSS	27/18
256	India -- Gulf of Khambhat — Shoal	51/17
257	India -- Gulf of Khambhat -- Dahej — Anchorage; berths; exclusion zone	27/18
267	India – Porbandar to Kachchigadh — Harbours	05/17
277	India – Gulf of Kachchh – Salaya Harbour — Pilotage	17/18
280	India -- West coast -- Mundra Port — Anchorages	31/18
281, 282	Gulf of Kachchh -- Tekra — Directions; buoyage; anchorage	18/17
282	India -- West coast -- Kandla — Directions; wreck	47/18
283	India -- Gulf of Kachchh -- Pathfinder Inlet — Directions; wreck	38/17
283	India -- Gulf of Kachchh -- Pathfinder Inlet -- Vadinar Offshore Oil Terminal — Wreck	07/18
283	India -- Gulf of Kachchh -- Pathfinder Inlet — Directions; wreck	38/17
287	Gulf of Kachchh -- Tekra — Directions; buoyage; anchorage	18/17
288, 289, 290	India -- Gulf of Kachchh -- Approaches to Kandla — Anchorage; Pilotage; Directions	18/17
291	India – Gulf of Kachchh – Hansthal Creek — Directions	22/17
292	India -- Gulf of Kachchh — Wreck	28/17
293	India -- Gulf of Kachchh — Wrecks	28/17
293	India -- Jakhau -- Godia Creek — Directions; lidar platform	10/18
302	Pakistan -- Karachi harbour — Directions; light buoy	30/17
303	Pakistan -- Karachi Harbour — Depths	05/18
304	Pakistan -- Karachi harbour — Pilotage	30/17
304	Pakistan -- Karachi Harbour — Pilot boarding position; harbour layout	05/18
305	Pakistan -- Karachi harbour — Directions; light buoy	30/17
305	Pakistan -- Karachi Harbour -- Oyster Islands — Directions; leading lights; breakwater	05/18
306	Pakistan -- Karachi Harbour -- Oyster Islands — PDWCP	05/18

63	Persian Gulf	18th Edition (2018)	27/18
62	Oman -- Strait of Hormuz -- West Bukha Oilfield — Directions; racon		37/18
62	Oman -- Muscat - Jazirat Muscat — Directions; position		49/18
77	Oman -- Muscat - Jazirat Muscat — Directions; position		49/18
79	Oman -- Muscat - Jazirat Muscat — Directions; position		49/18
82	Oman -- Muscat - Jazirat Muscat — Directions; position		49/18
89	Oman -- Shinas — Anchorage		27/18
102	Oman -- Strait of Hormuz -- West Bukha Oilfield — Directions; racon		37/18
122	Oman -- Strait of Hormuz -- West Bukha Oilfield — Directions; racon		37/18
134	Iran – Bandar--e Pars — Anchorages		27/18
147	United Arab Emirates -- Saqr Port — Directions; pilotage; terminal		44/18
148	United Arab Emirates -- Ra's al Khaymah -- RAK Maritime City -- RAK Khor Port — Directions; control tower; buoy; anchorages		27/18
149	United Arab Emirates -- Al Jazeera Port — Anchorages; pipeline; buoy		27/18
150	United Arab Emirates – Umm al Quwain — Anchorage		47/18
157	United Arab Emirates -- Dubai — Anchorage		49/18
165	United Arab Emirates – Abu Dhabi — Arrival information; pilotage		27/18
175	United Arab Emirates -- Approaches to Ar Ru'ays (Ruwais) and Jabal Az Zannah -Depths		48/18
177	United Arab Emirates -- Approaches to Ar Ru'ays (Ruwais) and Jabal Az Zannah — Directions		48/18
178	United Arab Emirates -- Approaches to Ar Ru'ays (Ruwais) and Jabal Az Zannah - Directions		48/18
187	Qatar – Doha — Arrival information; pilotage		27/18
188	Qatar – Hamad Port — Limiting conditions; UKC		27/18
189	Qatar – Hamad Port — Arrival information; pilotage		27/18
190	Qatar – Mesaieed — General information; approach and entry		27/18
191	Qatar – Mesaieed — Directions; approach and entry		27/18
194	Qatar – Outer approaches to Ra's Laffan — Directions; wreck		27/18
195	Qatar – Al Ruwais Port — Port information		27/18
196	Qatar – Ra's Laffan — Limiting conditions; local weather		27/18
196	Qatar – Ra's Laffan — Outer anchorages		51/18
201	Bahrain -- Bahrain approaches — Directions; wreck		27/18
202	Bahrain -- Port of Bahrain — Anchorages		27/18
204	Bahrain -- Port of Bahrain — Inner anchorages; berths		27/18
204	Bahrain -- Port of Bahrain — Berths		27/18
232	Kuwait -- Al Kuwayt Harbour — Wreck		32/18
233	Kuwait -- Khalij al Kuwayt — Development		27/18
234	Kuwait – Mina ash Shuwaykh — Directions		27/18
64	Red Sea and Gulf of Aden	19th Edition (2018)	16/18
127	Egypt -- Red Sea -- Safaga — Directions; lights		37/18
139	Sudan -- Port Sudan — Cautionary area		30/18
140	Sudan -- Port Sudan — Directions; wreck		30/18
310	Oman -- Port Salalah — Anchorages; pilotage		30/18
332	Djibouti -- Djibouti Port — Anchorages		30/18

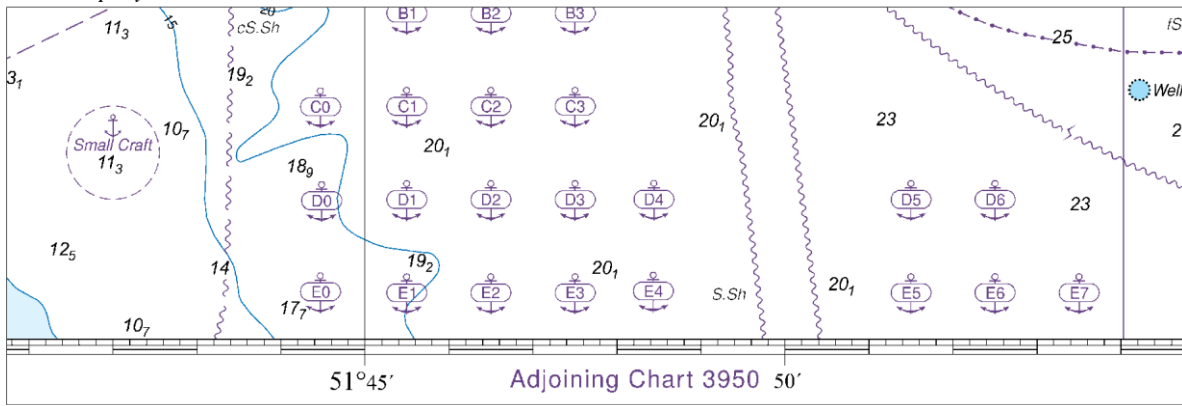
UPDATES TO MISCELLANEOUS ADMIRALTY NAUTICAL PUBLICATIONS*In force 03 January 2019*

<i>NP no</i>	<i>Page(s)</i>	<i>Title</i>	<i>ANTM Weekly Edition</i>	<i>PNTM Weekly Edition</i>
100	The Mariner's Handbook	(11th Edition 2016)	50/16	
	192	Submarine Pipelines and Cables	16/18	27/18
	321	Annex C Flags and Ensigns of Maritime Nations	16/18	27/18
	322	Annex C Flags and Ensigns of Maritime Nations	16/18	27/18
136	Ocean Passages for the World Volume 2	(1st Edition 2018)	10/18	
	231	Connector Routes. Connector to Connector Routes and Waypoints.	50/18	50/18
	235	Auckland, Brisbane, Buenaventura and Callao. Port to Port Routes and Port to Connector Routes.	50/18	50/18
	239	Gladstone, Harbour of Vancouver (Juan de Fuca Strait) and Hay Point. Port to Port Routes and Port to Connector Routes.	50/18	50/18
	243	Lazaro Cardenas, Long Beach and Lyttelton. Port to Port Routes, Port to Connector Routes and Waypoints.	50/18	50/18
	245	Melbourne, Newcastle, Oakland and Port Botany. Port to Port Routes and Port to Connector Routes.	50/18	50/18
	249	Port Kembla, Quintero, San Jose, San Pedrito Port, Tacoma, Tauranga and Townsville. Port to Port Routes and Port to Connector Routes.	50/18	50/18

PART – IV
MARINE INFORMATION

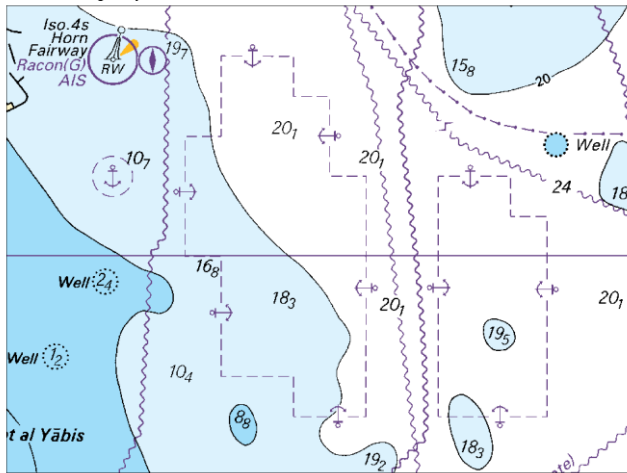
Nil

To accompany Pakistan Notice to Mariners 02/19.



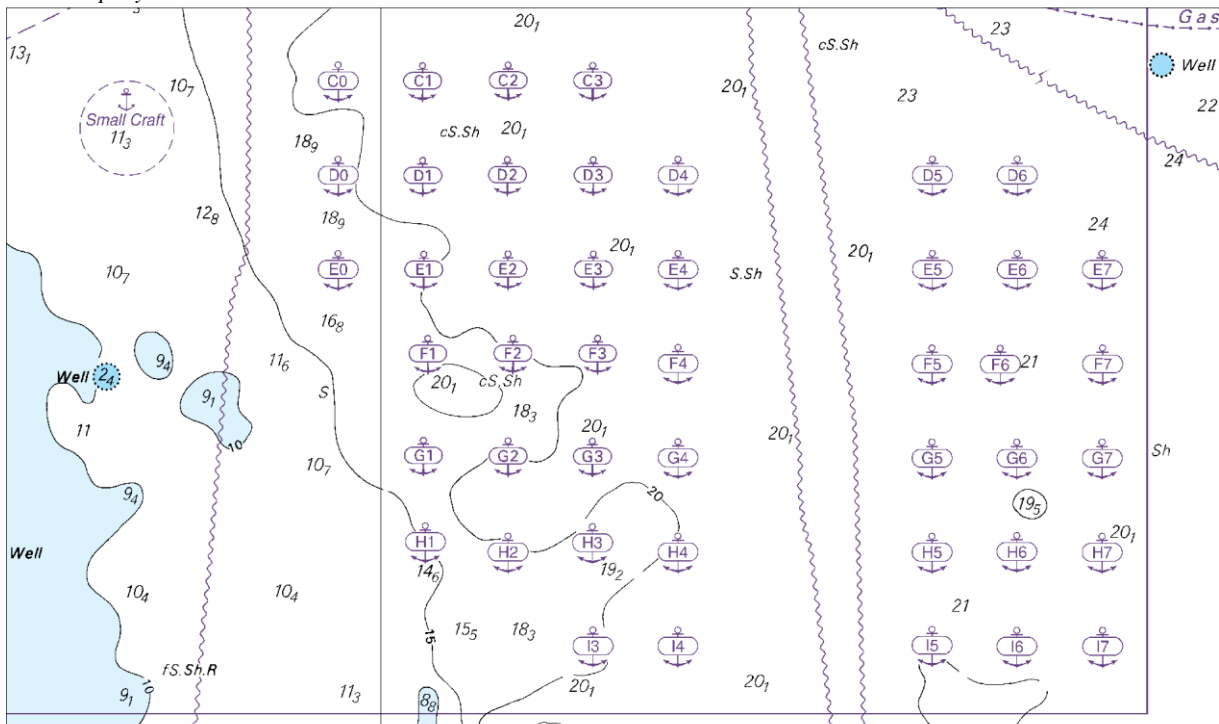
Block for BA Chart No.2523

To accompany Pakistan Notice to Mariners 02/19.



Block for BA Chart No.2886

To accompany Pakistan Notice to Mariners 02/19.



Block for BA Chart No.3950

NP77, Vol D Edition 2018/19, Weekly Edition No. 1, Dated 03 January 2019.
 Last Updates: Weekly Edition No. 52, dated 27 December 2018.

WEST COAST. PERTUIS D'ANTIOCHE. ÎLE D'OLÉRON						
D1287-3 FR, . 57470	- Bridge. Starboard	45 51.40 N 1 11.20 W	FI G 4s	3	.. White 3-sided structure, green border	<i>fl l</i>
*	*	*	*	*	*	*
D1287-35 FR, . 57480	- Bridge. Port	45 51.40 N 1 11.20 W	FI R 4s	3	.. White rectangular structure, red border	<i>fl l</i>
*	*	*	*	*	*	*
D5938 ZA, . Z5774	- Ben Schoeman Dock. Entrance. N Side	33 54.33 S 18 26.33 E	F R	11	9 White concrete tower	F R Neon vertical strip, over F R horizontal strip, directional along entrance channel *